



# AYA'AAWISHAG & BINESHIIZHAG

PAYATE ISHIKIISHWEWIN MAMAW TIPACIMOWIN

Ekii'oshippihikatek kacakosich kiisis 2026



Iwe Dazhiikewin Miikana daa-maanzhi-chigemagan jiwashkwe'aagani'indwaa aya'aawishag gaye gaa-maamaajaawaad zhiishiibag gaye gaa-maajaasigwaa bineshiinzhag, aaninda gaa-ani-angwiino-waad. Giishpin oew izhiseg, da-aanjise gaa-izhi-andooshibewaad Anishinaabeg gaye gii-andawenjigewaad, giishpin ani-angwiinowaad ogowe.

Gaa-gii-nanaando-gikenimindwaa aya'aa-wishag gaye bineshiinzhag:

- Apakwaanaajig / giowedino-apakwaanaa-jiig;
- Gaa-obiiwayiwad aya'aawishag (gwiing-)
- Wawaage / waabizheshi gaye amik;
- Jiigibiig gaa-dazhiikewaad daabishkoo omagakiig gaye ginebigoo;
- Waabigoniin gaa-noojitoowaad daabishkoo aamoog;
- Gaa-miskojaabid bineshiinzh;
- Bineshiinzh gaa-nagamod;
- Gaa-makadewijaabid bineshiinzh;
- Zaagwadamoo;
- Noopimiing gookooko'oo;
- Wilson bineshiinzh;
- Ininishib;
- Bineshiinzh gaa-nitaa-nagamod;
- Gaa-ozaawigwandashkwed bineshiinzh;

Ge-angwiiwaawapan:

- Migizi
- Gaa-ozaawi-bepeshaakiganed bineshiinzh;
- Awakaanigamig bineshiinzh;
- Gichi-zaaga'iganiing gaa-ayaad bineshiinzh;
- Gaa-makade-bepeshizid bineshiinzh;
- Gondaaganaabikong gaa-dazhi-ayaad bineshiinzh;
- Dibiki-bineshiinzh;
- Gaa-maanaajimod bineshiinzh;
- Gaa-gigiweshkited bineshiinzh;
- Gaa-ozaawigaaded bineshiinzh;
- Gaa-ozaawigaaded bineshiinzh;
- Gaa-gizhiiyaashid bineshiinzh;
- Makade-bineshiinzh;
- Gaa-dakootawaged gookooko'oo;
- Egaa gaawiikaa gaa-naagozid bineshiinzh;



## Ezhiseg noongom

Gaa-gii-nanaando-gikenimindwaa ezhisewaad aya'aawishag (2019 biinish 2023), bineshiinzhag gii-nanaando-giken-imaawag 2018 biinish 2022), Anishinaabe Gikendaasowin gaye gaa-waabanjigaa-degiban gikendaasowin gii-wiiji'iwemagan.

Owe gikendaasowin gii-maawadoonigaa-de ji-gikenimindwaa aya'aawishag gaye bineshiinzhag, omaa waabandan:

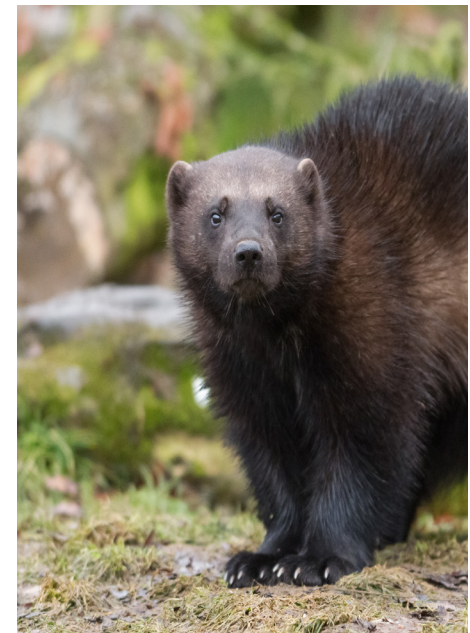
### Apakwaanaajiig / gaye giwedino- apakwaanaajii

- Waawaasa ayaani gaa-izhi-dazhewaad noozhe-apakwaanaajiig gaawiin bepesho gaa-gii-izhi-waabanjigaadeg gii-nanaando gikenjigaadeg iwe;
- Gaawiin ayaasinog aapiji ge-izhi-anwebi-waad gaye ge-daningwaamiwaad izhi-maanzhise aaniin minik apakwaanaajiig ge-bimaadiziwaad imaa besho inake;
- Zhaawanong imaa gaa-gii-izhi-ganawaa-biwaad gaye imaa Albany Ziibiing gaye Ogoki Ziibiing izhi-anweshinoog gaye-izhi-nibaawag igi apakwaanaajiig;
- Gaawiin ayaasinoonan gaa-nagajigaade-gin gete-asiniikewinan ge-izhi-gabeshi-waapan apakwaanaajiig imaa gaa-gii-izhi-waabanjigaadeg;
- Igi gaa-ozaawiziwaad apakwaanaajiig nawach gii-baatiinowag imaa apiich wiin igi giwedino-apakwaanaajiig, gaa-gii-izhi-inaabiwaad; gaye
- Gaawiin aapiji gii-ayaasiwag apakwaa-naajiig imaa besho inake, nawach dash gii-baatiinowag gaa-izhi-mangitigwe-yaagin ziibiin.



### Gwiingwawaageg

- Niizho-biboon ezhiseg, 39 gwiingawaa-geg gii-waabamaawag imaa 54 gii-dasingin gaa-gii-waabanjigaadeg, 2022 gi-izhiseg, 28 gii-izhi-waabamaawag gaye dash 2023 30 gii-izhi-waabamaawag.
- 17 gwiingwawaageg gii-waabamaawag: niwin noozheg niizhin naabeg gaye 11 gaawiin gikenjiganiwisiwag awenen dinookaan. Awashime nawach niibiwa 17 gwiingwawaageg ayaadogwenag, gaawiin ayaasinoonan mazinaakizonan;
- Minik eyaawaad 1.21 Gwiingwa'aageg 1000 km<sup>2</sup>, apii 2022 gaye 0.06 minik eyaawaad 2023.
- Ngojigo 43 gii-dashiwag gwiingwawaageg e-ayaawaad imaa besho gaa-izhi-ganawaabanjigaadeg 2022 gii-izhiseg, gaye 21 apii 2023 gii-izhiseg; gaye
- Gaa-izhi-daawaad gwiingwawaageg aatiinadanoon imaa besho gaa-izhi-ganawaabanjigaadeg.



## Waabizheshi

- Baatiinadan ge-izhidaawaad waabizheshiwag imaa, gaa-izhi-ganawaabanjigaadeg aki; gaye
- Gikenjigaadeg aaniin minik aya'aawish-ensag ge-amwaawaad igi waabizheshiwag gaye ge-dazhiikewaad mii ge-izhi-gikenjigaadeg aaniin endashiwaad waabizheshiwag.



## Amik

- Baatiinadanoon gaa-izhi-dazhewaad amikwag imaa besho gaa-izhi-waabanjigaadeg aki;
- Nawach baatiinadanoon amik waazhan gaye giba'iganan gaye gaa-namechige-waad amikwag zhawanong inake imaa, nawach dash bangii imaa ishkoniganing
- Ngojigo 56,025 hectares minik izhi-gabe-shiwag amikwag gaa-izhi-ozhitoowaad waazhan gaye ge-miijiwaad, ngojigo 37.64% imaa gaa-izhi-waabanjigaadeg.



## Ginebigooq gaye omagakiig

- Ngodwaaswewaanagiziwag omagakiig; ziigwani peeper, bakaan miinawaa dinookaan omagakii, mitigo-omagakii, giiwedino-omagakii, zhaangweshii-omagakii gaye gichi-mookomaani-omagakii. Gakina gii-mikawaawag imaa gaa-izhi-waabanjigeng.
- Awe bezhig dinookaan ginebik eta gii-waabamaa imaa; gaye
- Baatiinadan mashkiig ge-izhidaawaad omagakiin gaye ngojigo 72.44% akiing ayaamaganoon imaa.



## Aamoog

- Niswewanagiziwig aamoog, gaye ikwe-manijooshag ge-angwiiwaapan imaa gaa-izhi-ganawaabanjigaadeg aki besho. Ogo Ashton aamoo, Sucklely's aamoo, gichi-aamoo gaa-bepeshizid, gaa-zhaangaso-baapaatewizid ikwe-manijoosh gaye miinawaa godak dinookaan manijoosh.beetle.



## Ge-angwiiwaapan Bineshiinzhag

- Ngojigo 20% biinish 85% imaa gaa-izhi-waabanjigaadeg daa-gabeshiwag bineshiinzhag;
- Gaa-miskojaabid, ovenbird, gaa-makade-wijaabi, gookooko'oo, Wilson snipe, ininishib, palm warbler, gaa-ozaawi-gwandashkwed gaye giiwedinoshib gii-waabamaawag, gaawiin eta sora gaye osprey; gaye
- Igi godak bineshiinzhag ge-angwiiwaapan odayaanaawaa ge-izhi-dazhiikewaad imaa gaa-izhi-ganawaabanjigaag.



## Bineshiinzhag ge-angwiiwaapan

- Bebakaan gii-izhi-gabeshiwag igi bine-shiinzag gaa-gii-waabamindwaa, gaa-daswewanagiziwaad, aaninda bangii eta (0.1%) aaninda dash niibiwa (60%).
- Ogo maawach gii-mikawaawag ogo nighthawk, migizi, awe dinookaan fly-catcher gaye jachakanoo; godak dinoo-kaanag ge-angwiiwaapan gaawiin aapiji gii-waabamaasiwig; gaye
- Noongom gaa-izhiseg, mii enenjigaadeg igi bineshiinzhag ge-angwiiwaapan ogashkitoonaawaa ji-bimaaji'idizowaad imaa Gaa-izhi-ganawaabamindwaa Imaa Inake, noongom gaa-izhinaagochigewaad.



## Ge-inishkaagemagakiban gaye ji-manaajichigaadeg

Gii-nanaando-gikenjigaade aan ge-inish-kaagemagak iwe Dazhiikewin Miikana imaa gaa-ayaawaad aya’aawishag gaye gaa-izhi-bimaadiziwaad. Nisin gegoonan gii-ganawaabanjigaadewan: aaniin minik aki eyaamagak ge-izhi-gabeshiwaad, aaniindi eyaag iwe aki, gaye aaniin ge-izhi-bimaaji’idizowaad igi. Dazhiikewin Miikana inenjigaade ji-maanzhichigema-gak gaye ji-bichibizo’iwed odaabaancause habitat loss, disturbances and dust, with a potential increase in vehicle collisions.

Aya’aawishag	Ge-inishkaawaapan
<p><b>Gakina Bineshiinzhag gaye Aya’aawishag</b></p>	<ul style="list-style-type: none"> <li>• Ziigiseg waasiganibimide azhashki da-maanzhise, gaye gakina bemaadiziima-gak imaa gaye bineshiinzhag.</li> <li>• Da-nisaawag bineshiinzhag baashkidewi-sigeng.</li> <li>• Aya’aawishag biizhaawaad imaa o-da-nisaawaa’ bineshiinzha’.</li> <li>• Da-bichibizowag bineshiinzhag gaye aya’aawishag.</li> <li>• Da-wanashkwechigaadewan wazonan gaye waawanoon ozhichigaadeg miikana.</li> <li>• Dagoshinowaad awiyag, da-andawenjige-wag, da-nisaawag dash aya’aawishag.</li> <li>• Anaamakamig nibi aanjiseg da-aanjise azhashki gaye gitigaanan.</li> <li>• Nibi gaa-ayaag ogidakamig aanjiseg da-onji-maanzhichigemagan bimaadiziwin.</li> <li>• Nibi ogidakamig gaa-ayaag aanjiseg da-aanjise azhashki gaye gitigaanan.</li> <li>• Giishpin metaa’ang aki jiigibiig, da-aanjise nibi, azhashki gaye gitigaanan.</li> <li>• Gaabaashkinedaawangiseg daa-aanjise azhaashki gaye gitigaanan, jimaanzhiseg.</li> <li>• Ishpiming gaa-izhisemagak gaa-wiinadak daa-onji-aanjise azhashki gaye gitigaanan, bineshiinzh ji-maanzhised.</li> <li>• Bakaan gaa-onjiigin gitigaanan daa-onji-aanjise omaa gaa-ayaag gitigaan, binesh-iinzhag gaa-izhi-dazhiikewaad.</li> <li>• Wanitoowaad gaa-izhi-dazhiikewaad da-onji-maanzhisewag omaa gaa-ayaawaad.</li> <li>• Gaa-waasikwaneg, gaa-ombiigiziimaak gaye awiyag gaa-izhi-ayaawaad da-onji-aanjisemagak aya’aawishi bimaadiziwin.</li> </ul>

Aya’aawishag	Ge-inishkaawaapan
<p><b>Gaa-obiwayiwaad aya’aawishag</b></p>	<ul style="list-style-type: none"> <li>• Dazhiikewin Miikanaang da-izhaawag nawach gaa-mindidowaad aya’aawishag ji-nisaawaad gaa-agaashiinzhinid, nawach ji-agaasiinowaad igi.</li> <li>• Nawach ani-baatiinong, wanii’igewaad dash awiyag da-onji-agaasiinowag aya’aawishensag.</li> </ul>
<p><b>Ovenbird, bineshiinzh gaa-nagamod, giwedino-bineshiinzh, dibiki-bineshiinzh, waabanong bineshiinzh, gookooko’oo, jachakanoo.</b></p>	<ul style="list-style-type: none"> <li>• Dazhiikewin Miikanaang jiigiya’ii da-onji-nisaawag bineshiinzhensag wazasoning gaa-ayaawaad.</li> </ul>

Ikidonaaniwan ji-gagwe-gibitinigaadeg gii-maanzhidoodawindwaa bineshiinzhag gaye aya’aawishag imaa noopimiing. Owe daa-izhichigem:

- Ikidonaaniwan ji-gagwe-gibitinigaadeg gii-maanzhidoodawindwaa bineshiinzhag gaye aya’aawishag imaa noopimiing. Owe daa-izhichigem:
- Daa-izhichigaade ji-ayaasigwaa ini gitig-aanan bakaan gaa-onjiigin;
- Megwaa ozhichigaadeg iwe Dazhiikewin Miikana, ji-biminizha’igaadegin inakoni-gewinan Gaa-inishkaagemagak, bagidi-nigewinan, godak inakonigewinan Gaanada Akiing Inishkaagewin, Ontario Inishkaagewin Ogimaawiwini gaye Parks gaye Ontario Aki Aabajichigewin, gaye Ontario Gaa-inishkaageng Ganawenjige-win gaye Ontario Ogimaawiwini Aabajichi-gewin da-biminizha’igaade;
- Ozichigaadeg Inishkaagewin Izhichigewin gaye Inishkaagewin Ganawenjigewin ji-manaa’izhiseg iwe gii-baashkinedaawing-iseg mitaawang gaye ishping gaa-izhiseg gegoon;
- Gaawiin aapiji jianokiing imaa gaa-dazhi-ozhichigaadeg miikana gaye godak;
- Ji-ayaasinogin baashkiziganan;
- Ji-aabajichigaadesinogin miikanawan noongom gaa-aabajichigaadesingin;
- Ji-izhaanaaniwanzinog eyaawaad ge-angwiiwaapan aya’aawishag;
- Gaawiin gii-ziigwang gaye gii-niibing ji-anokiinaaniwanzinog edazhewaad igi;
- Ji-gikino’amawindwaa gaa-anokiiwaad ji-manaaji’aawaad ini ge-angwiiwaapan;
- Jibwaa-bakwadakiibijigewaad, ji-inaabi-waad gaawiin ji-ayaawaad imaa igi;

## Ishkwaawaach Ge-inishkaageng

Maagizhaa da-meshkodendaagwad ezhichigewaad awesiinyag gaye bineshiinyag gaye minik ge-dashiwaad. Bangii eta go da-wanishkwejigaadewan awesiinyag endanakiiwaad Local gaye Regional Study Areas Gaa-dazhinjigaadeg, da-ombiigad, gaye da-waasakone, da-baashkineyaa, nawaj niibiwa gaa-anokiiwag awiyag. Maagizhaa aanind awesiinyag da-aandakiiwag owe onji miikana, maagizhaa aanind da-bichibizowag awesiinyag, aanind awiya apakwanaajiinyag, gwiingwa’aageg, waabizheshiwag, amikwag, omakakiig, gaye amoog. Inendamoo mii go bezhigwan, ge-inendaagwak da-wanishkweyaawag ginebigoo maagizhaa gaawiin omaa daa ayaasiwag.

Gwiingwa'aageg endaawaad, da-meshkodendaagwad, maagizhaa nawaj da-baatayiinowag gwiingwa'aageg, maagizhaa da-moozhaganjigewag gwiingwa'aageg omaa Regional Study Area gaa-naanaagajichigaadeg. Miiwan onowe gaa-gii-dazhinjigaadegin omaa mazina'iganing, miiwan onowe aanind gaa-dazhinjigaadegin bichibizowaad awesiinyag, aanind geyaabi awiya, ombiigwewebidewan. Apii ozhichigaadeg Miikana gwiingwa'aageg endaawaad da-bakaanendaagwad maagizhaa gemaa da-baatayiinowag gwiingwa'aageg.

Amii gaye bineshiinzhag ge-izhi-maanzh-idoodawindwaa aanawi manaaji'indwaa. Gaawiin aapiji oda-ayaasiinaawaa ge-izhi-wazonikewaad, ji-wanashkwe'ind-waa. Ishkwaa-giizhichigaadeg miikana, gaawiin aapiji da-gichi-aanjisesinon (gaa-izhi-dazhewaad bineshiinzhag). Mii go go geyaabi ge-izhi-babimaadiziwaad gakina igi bineshiinzhag gaa-gii-dazhimin-dwaa omaa.

## Maamaw Ge-inishkaageng

Maamaw ge-inishkaageng iwe gaa-ijigaa-deg (giiyaabi gaa-izhisesg gii-ishkwaa-aanjichigaadeg gegoon) ozhichigaadeg iwe Dazhiikewin Miikana gaye godak izhichigewinan ani-akiiwang ge-dazhiiki-gaadegin, daabishkoo Giiwedn Miikana, Aanaconda gaye Painter Zaaga'igan Mitigokewin Miikana Wawezhichigaade-gin gaye Rapid Bizhiw Izhichigewinan, imaa aya'aawishag gaye bineshiinzhag ji-maanzhidoodawindwaa wanashkwe'ind-waa gaye gii-ombiigizing, gii-baashkine-daawangiseg, gii-aanjiseg aki. Gaawiin aapiji da-gichi-izhisesinon. Giiyaabi o-da-ayaanaawaa gedanakiiwaad binesh-iinzhag gaawiin imaa Dazhiikewin Miikana gaa-ayaag gaye godak izhichi-gewinan. Da-mino-ayaawag aya'aawish-ag gaye bineshiinzhag aanawi owe aansjiseg.

Maagizhaa da-maajinzhikawaawag gwiingwa'aageg, gaa-gii-endaawaad maagizhaa gaye da-onzaamiinowag gwiingwa'aageg inamoog miikana. Onzaam maajinzhikawaawag endaawaad, maagizhaa aanind da-bichibizowag, da-baatayiinowag odaabaanag ge-bimibizowaad gaye da-ombiigwewebidewan gegoo omaa Regional Study Area.

Iwe Dazhiikewin Miikana dazhiikigaadeg da-naagadawaabanjigaade giiyaabi ezhiseg gegoon ji-waabanjigaadegin inaakonigewinan akiikaaning gaye Gaa-nada Akiing gaa-ayaagin gaye ji-gaganonindwaa Anishinaabeg. Ji-mino-doodawindwaa aya'aawishag gaye bineshiinzhag inwaadewan ono inaako-nigewinan, ji-aanjichigaadeg gegoon giishpin inendaagwak. Gaye Aki Oshki-izhichigewin da-ozhichigaadeg Dazhiikewin Miikana izhiseg, ji-izhi-dazhewaad bineshiinzhag gaa-mamaa-jaawaad zhaawanong. Da-aanjichigaade giishpin inendaagwak.

## Awashime na kiwiikikentan?

Giishpin nawaj geyaabi gegoo wii-gikendamang, weweni gidaa-agindaan ji-gikendaman Aaniin Ge-meshkojishkaag / Gidakiiminaang Mazina'igan.

### Kekanonach Wiintamakewinan

Kinantomiko ima cishayan akwaaahkiink tashiikewinik miikana kapimanokiitamowach anapii piko wiikakweteyan kayema wiipakitinaman ikitowin.

Piiwapikonk: [eaisinput@martenfallsaccessroad.ca](mailto:eaisinput@martenfallsaccessroad.ca)

Kitowinik: 1-800-764-9114

Piiwapik: [eais.martenfallsaccessroad.ca](http://eais.martenfallsaccessroad.ca)

